

BOSS Products limited consumer warranty and BOSS Products commercial warranty policies are located at www.BOSSPlow.com.

Patent www.ttcopats.com.

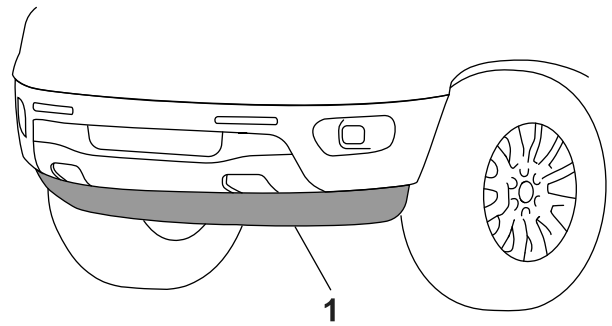
Safety

- Always follow the vehicle manufacturer's recommendations relating to system installation. For recommended vehicle models, refer to the *BOSS Snowplow Application Chart and Selection Guide*.
- Never disable, remove, or relocate any sensors or other components related to the operation of the air bags.
- To comply with federal regulations and to assure a safe vehicle, do not exceed the front gross-axle-weight rating (FGAWR), rear gross-axle-weight rating (RGAWR), and the gross-vehicle-weight rating (GVWR) at any time.
- Due to the variety of equipment that you can install on the vehicle and undercarriage, do not exceed the front gross-axle-weight rating (FGAWR), rear gross-axle-weight rating (RGAWR), and the gross-vehicle-weight rating (GVWR) at any time. This may require weighing the vehicle and adding ballast as necessary. It may also limit the payload capacity of the vehicle.

Installation

Determine the left and right sides of the vehicle from the normal operating position.

1. Park the vehicle on a level surface, engage the parking brake, shut off the engine, and remove the key.
2. Remove the skid plate, tow hooks, inside panels, and lower bumper valance (if equipped) for accessibility. Retain the hardware.



g324212

Figure 1

1. Lower bumper valance



3. Loosely install the side brackets to the chassis using the existing tow hook mounting hardware.

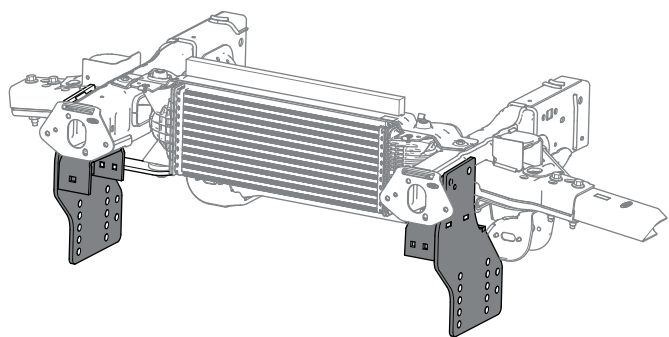


Figure 2

g543968

4. Secure each angled bracket to the side plates using 2 bolts (1/2 inch) and 2 locknuts (1/2 inch).

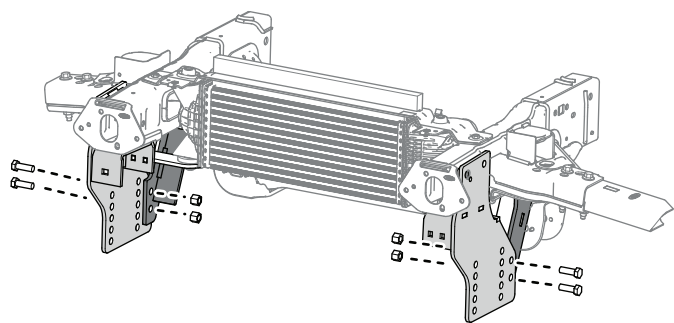


Figure 3

g543969

5. Mark the holes shown below.

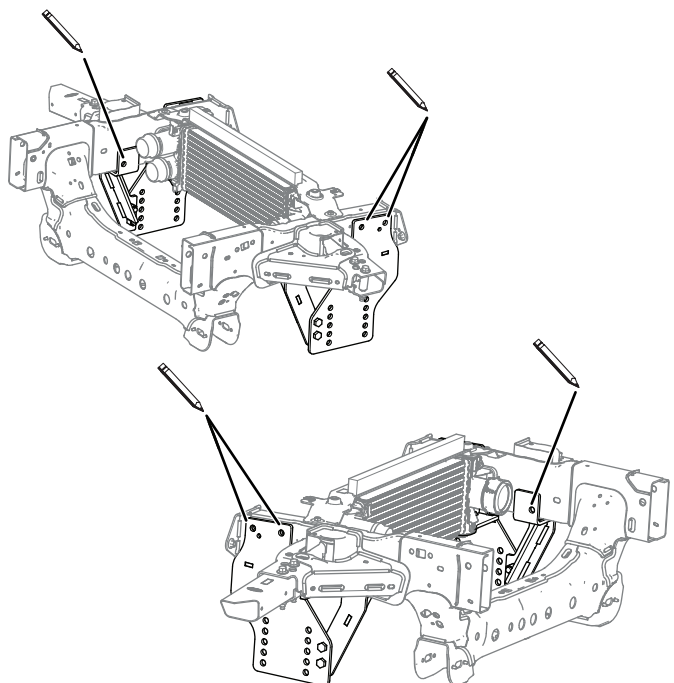


Figure 4

g543980

⚠ WARNING

Using a drill without proper eye protection may allow debris to enter the eye, causing injury.

When drilling, always wear eye protection.

6. Remove the side plate and drill 6 holes (14 mm or 9/16 inch).
7. Using a bolt puller (1/2 inch), loosely secure the top of the brackets to the vehicle frame using 3 bolts (1/2 inch), lock washers, and full nuts (1/2 inch) on each side.

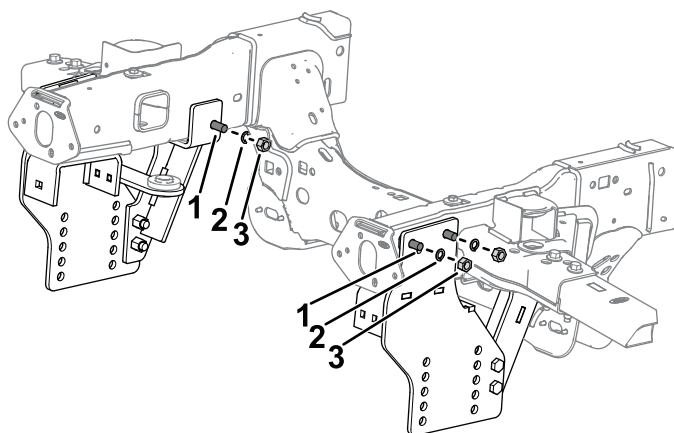


Figure 5

g543994

1. Bolt (routed into the frame)
2. Lock washer
3. Full nut

8. Secure the horizontal part of the bracket to the chassis using existing hardware. Torque the bolts to 89 N·m (66 ft-lb).

9. Loosely secure the pushbeam to the side panels using 4 bolts (1/2 inch) and 4 locknuts (1/2 inch) on each side.

Refer to your plow *Owner's Manual* and www.BOSS.com for the appropriate pushbeam.

Refer to the table below for the appropriate pushbeam height.

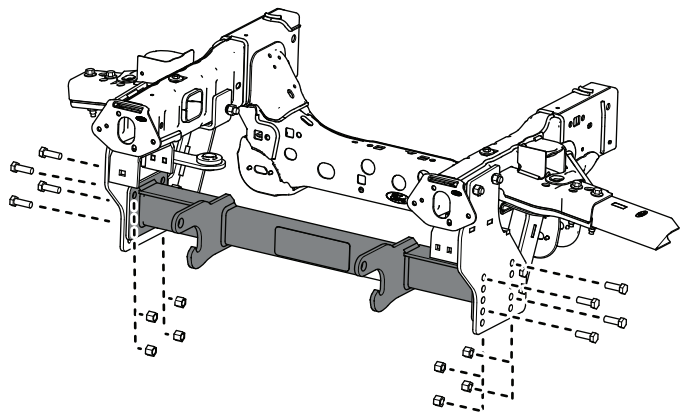


Figure 6

g543995

Recommended Pushbeam Height

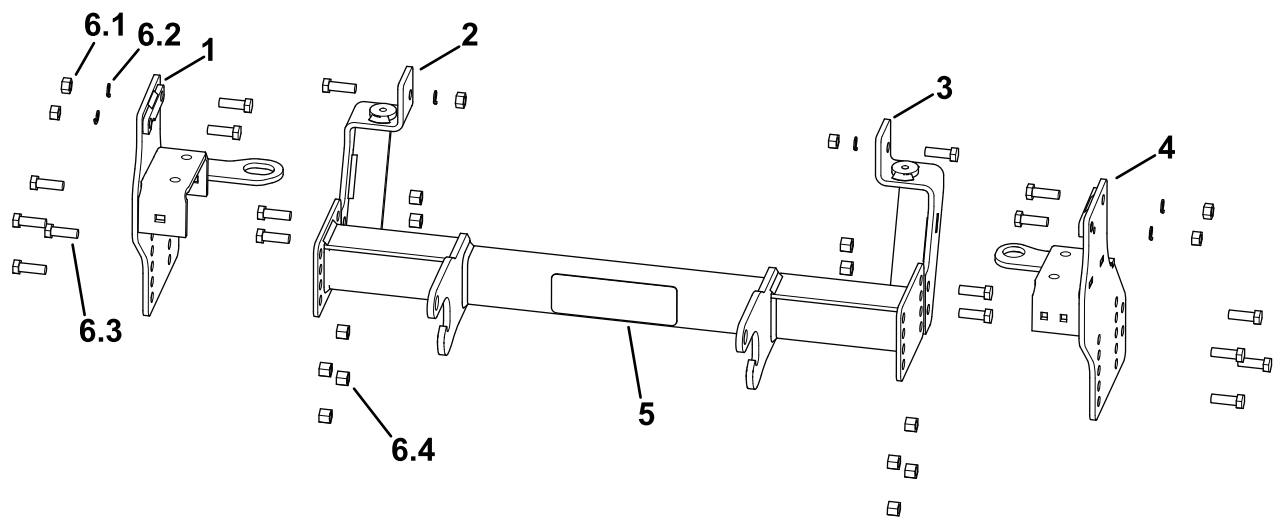
| Plow Type | Recommended Pushbeam Height |
|-------------------|-----------------------------|
| Rear Mounted Plow | 48 cm (19 inches) |
| UTV | 44-1/2 cm (17-1/2 inches) |
| Heavy Duty | 15 cm (16-1/2 inches) |
| Standard Duty | 39 cm (15-1/2 inches) |
| HTX/Sport Duty | 37 cm (14-1/2 inches) |

10. Torque all the fasteners to the following specifications:

- M12 bolts to 89 N·m (66 ft-lb)
- 1/2-inch bolts to 76 N·m (56 ft-lb)
- 5/16-inch bolts to 20 N·m (177 in-lb)

Important: Tighten all fasteners again after 2 hours of plowing.

11. Trim the front bumper to fit around the undercarriage assembly.



g543951

Parts

| Ref. | Part Number | Qty. | Description |
|------|-------------|------|----------------------------------|
| 1 | PBA28783-03 | 1 | PBSP ASM, '24+ RANGE |
| 2 | LTA28944-03 | 1 | ANG BRKT WLDMNT, PS, '24+ RANGER |
| 3 | LTA28945-03 | 1 | ANG BRKT WLDMNT, DS, '24+ RANGER |
| 4 | PBA28784-03 | 1 | PBSP ASM, DS, '24+ RANGER |
| 5 | PBA05277-03 | 1 | PB ASM,RT3 SP,WRANG07+,TACOMA05+ |
| 6 | HDW24096 | 1 | FASTENER KIT, FORD, RANGER 19+ |
| 6.1 | HDW02410 | 6 | NUT,1/2-13,FIN,FULL,YZN |
| 6.2 | HDW01732 | 6 | WASHER,1/2,SPLIT LOCK,YZN |
| 6.3 | HDW01728 | 18 | HHCS,1/2-13X1-1/2,NC,GR5,YZN |
| 6.4 | HDW01748 | 12 | NUT,1/2-13,NYL INS,YZN |
| | MSC09670 | 2 | BOLT PULLER,1/2-13 |